

Top to Bottom - Cable Display System

WARNING

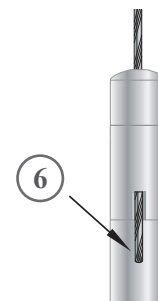
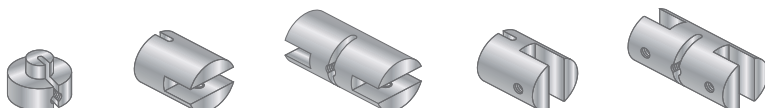
- This system must be installed according to manufacturer's instructions and be done so by qualified installer.
- All installation must be done so with proper hardware and protective gears to ensure safety.
- Total weight of system is not to exceed manufacturer's recommended safe weight load.

- * Some components are pre-assembled and will require minimal dismantling prior to installation.
- ** Use a plumb line to reference install locations before drilling.

- 1) Mount part (A). #8 screw or M6 stud.
- 2) Attach part (B) onto (A). Cable should be inserted.
- 3) Mount part (C). #8 screw or M6 stud.
- 4) The cable (D) should be inserted through part (B) at this point, if not do so prior to proceeding to next step.
- 5) Attach sub-assembly (E) to (C). Leave plenty of threads for tensioning.
 - Loosen set screws to reposition the direction of cable exit.
- 6) Insert the bottom end of the cable through top of (E) until a manageable length of cable is through the cable exit. Pull tight all excess cables through the assembly. Tighten (E) to tension cable.
- 7) Unscrew M4 set screws on cable slots to place the clamps (F) onto the cable. Assemble the set screws back in place to secure the clamps on the cable.

Make final adjustments to the clamp location before tighten. The panels can now be put into place.

It is important to check that parts are properly tightened prior to usage.



• Parts (F) can be any of the clamps/supports that are available. Contact us for range of available clamps.