

Wall to Wall - Rod Display System

WARNING

- This system must be installed according to manufacturer's instructions and be done so by qualified installer.
- All installation must be done so with proper hardwares and protective gears to ensure safety.
- Total weight of system is not to exceed manufacturer's recommended safe weight load.

* Use a plumb line to reference install locations before drilling.

1) Assemble the rods (A) with the coupling caps (B&C).

** The rods can be cut to length to achieve the desired total top and bottom height. Cut only the round tip or internal threaded side.

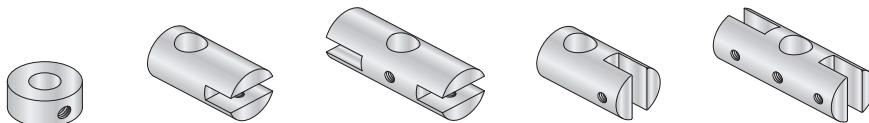
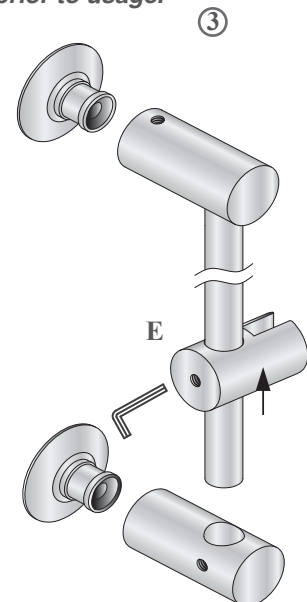
2) Use sub-assembly (A-C) as a wall template. Mark the drill positions and install parts (D). Use #8 screw or M6 stud.

3) Disassemble (C). Insert parts (E) onto the rod. Lightly tighten them in place. Re-assemble (C).

4) Mount sub-assembly (A-C & E) onto parts (D). Tighten in place.

Make final adjustments to the clamp location before tighten. The panels can now be put into place.

Always check that parts are properly tightened prior to usage.



• Parts (F) can be any of the available clamps.