

Wall to Wall - Cable Display System

**WARNING**

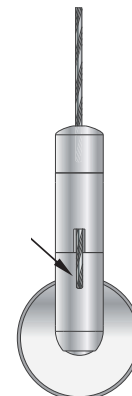
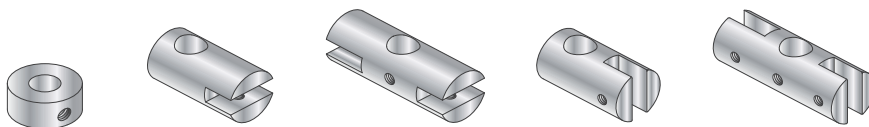
- This system must be installed according to manufacturer's instructions and be done so by qualified installer.
- All installation must be done so with proper hardware and protective gears to ensure safety.
- Total weight of system is not to exceed manufacturer's recommended safe weight load.

- \* Some components are pre-assembled and will require minimal dismantling prior to installation.
- \*\* Use a plumb line to reference install locations before drilling.

- 1) Mount part (A) to wall. #8 screw or M6 stud.
- 2) Screw sub-assembly (B) and (C) onto (A). The cable should be inserted along with sub-assembly (B) at this point. If not, do so prior to proceeding.
  - Loosen set screws to reposition the direction of cable exit.
- 3) Insert the bottom end of the cable through top of (C) and through the cable exit. Pull tight all excess cable length through the assembly. There should be minimal slack in the cable. Cut excess length.
- 4) Unscrew M4 set screws on cable slots to place the clamps (D) onto the cable. Assemble the set screws back in place to secure the clamps on the cable.

*Make final adjustments to the clamp location before tighten. The panels can now be put into place.*

*Check that all parts are securely tightened prior to usage.*



• Parts (D) can be any of the clamps/supports that are available. Contact us for range of available clamps.